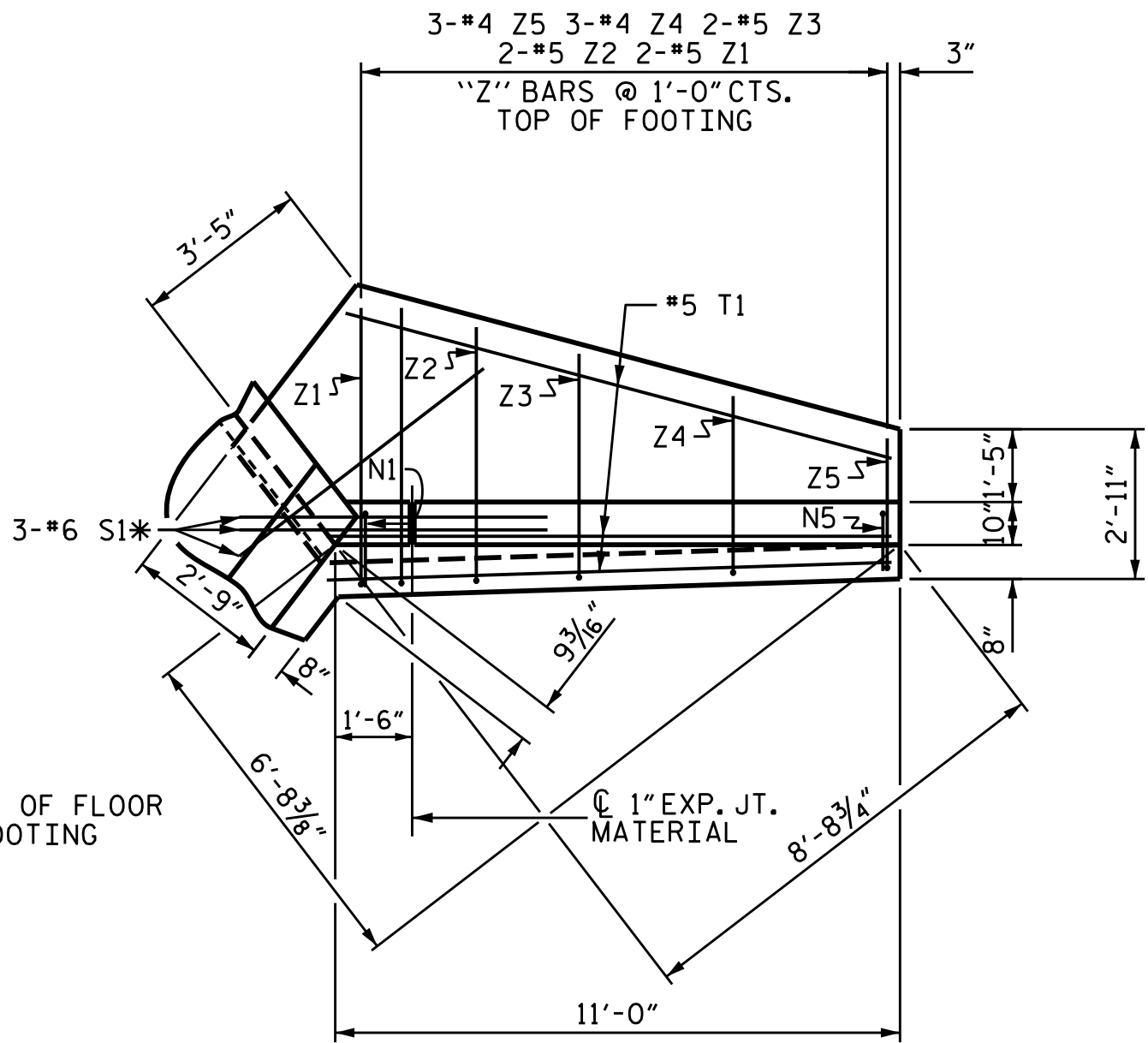


PLAN W1

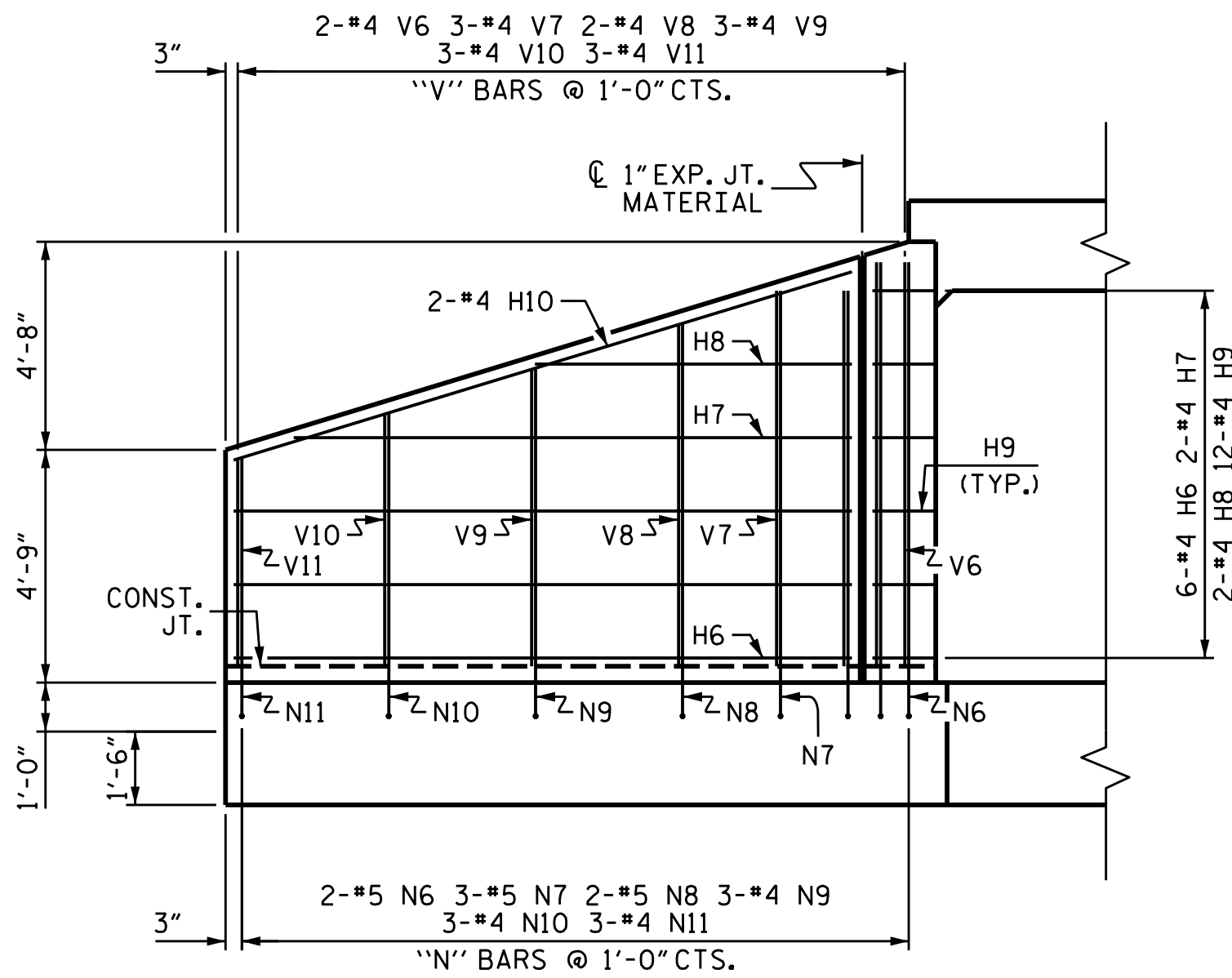


PLAN W2

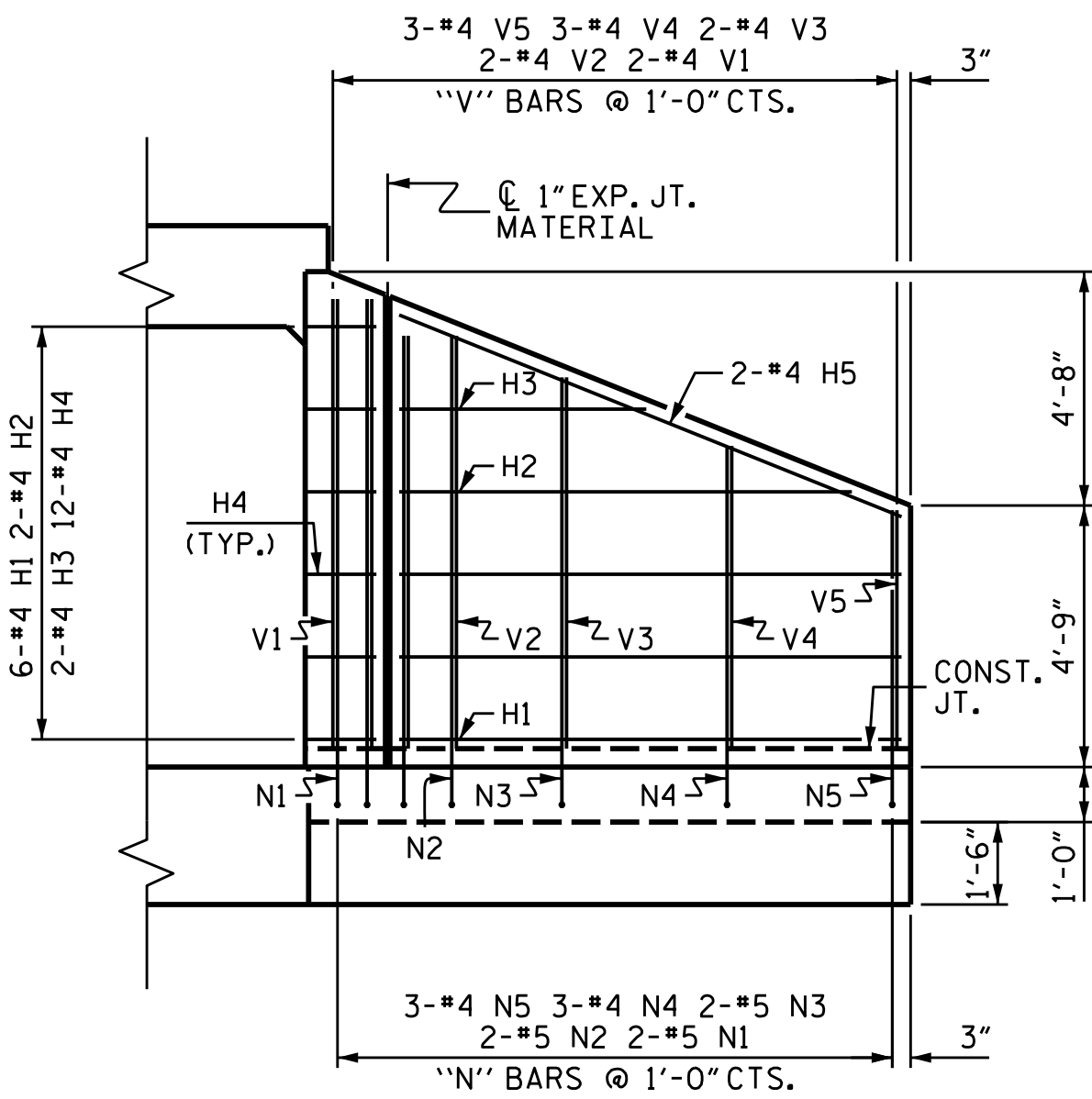
NOTES

A 3 FOOT STRIP OF FILTER FABRIC SHALL BE ATTACHED TO THE FILL FACE OF THE WING COVERING THE ENTIRE LENGTH OF THE EXPANSION JOINT.

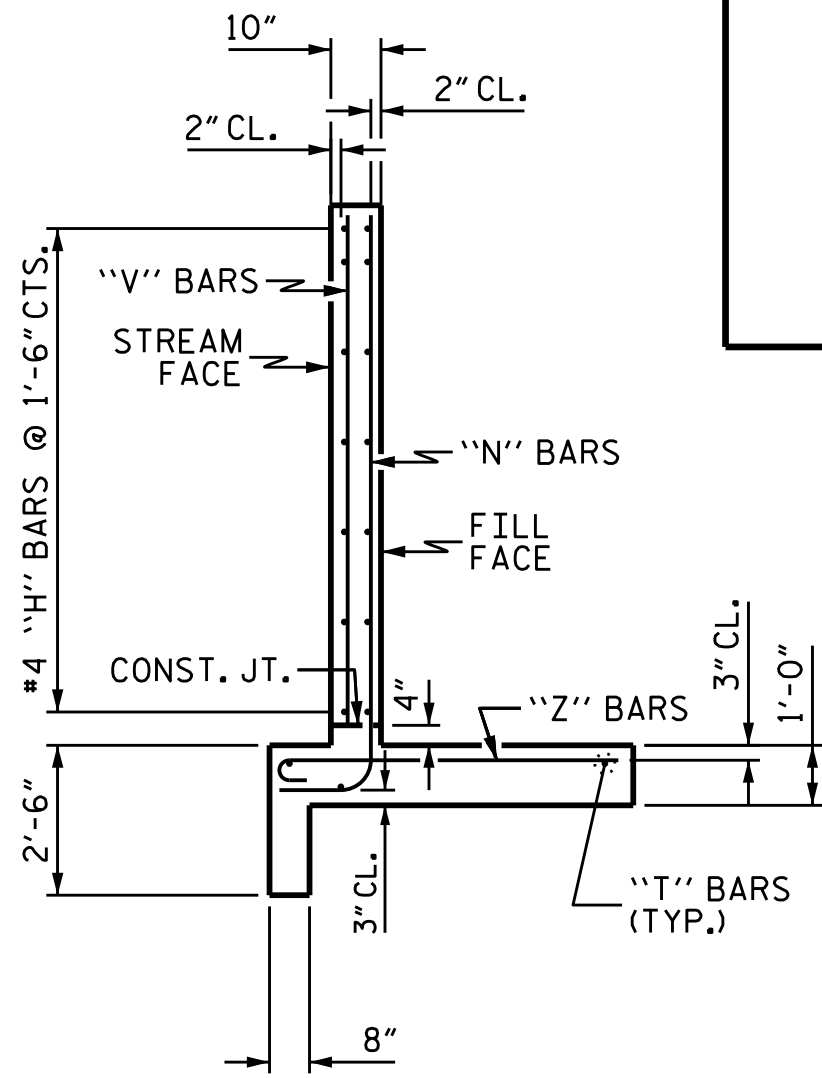
G1 BARS IN HEADWALL ARE INCLUDED WITH THE BARREL REINFORCING STEEL.



ELEVATION W1

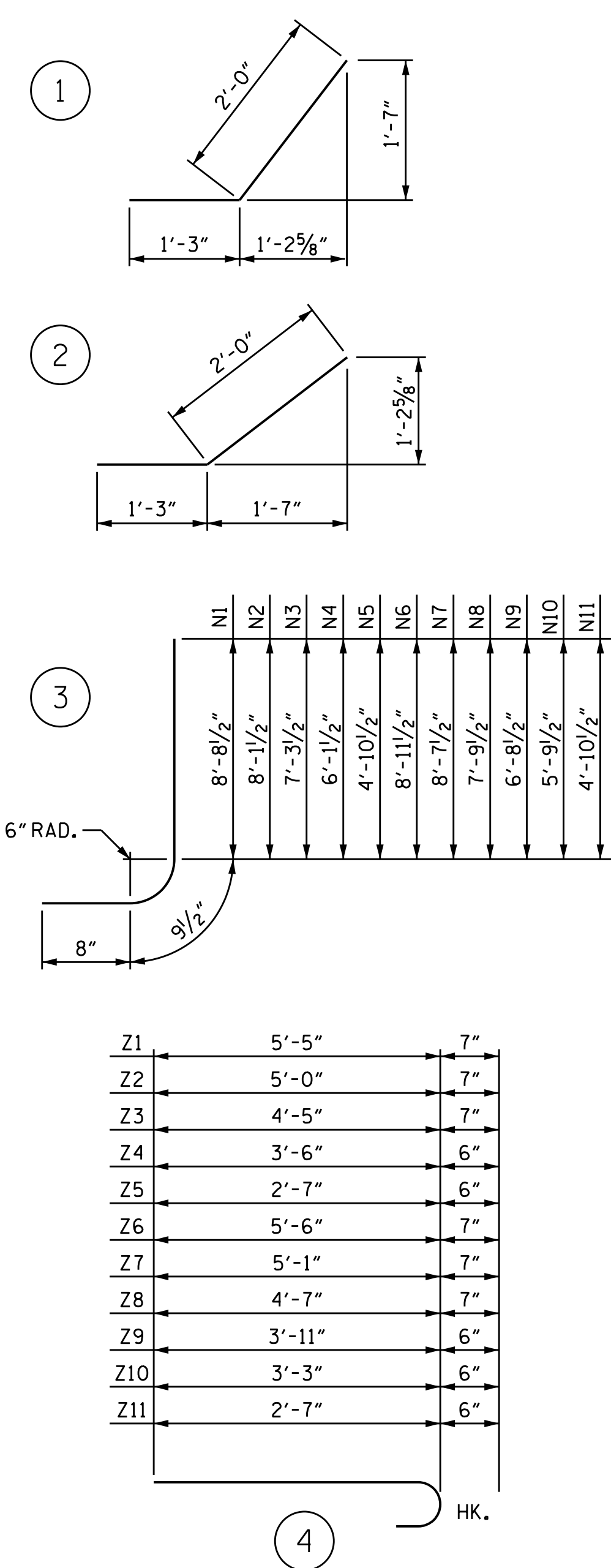


ELEVATION W2



TYPICAL WING SECTION

BAR TYPES



Z1	5'-5"	7"
Z2	5'-0"	7"
Z3	4'-5"	7"
Z4	3'-6"	6"
Z5	2'-7"	6"
Z6	5'-6"	7"
Z7	5'-1"	7"
Z8	4'-7"	7"
Z9	3'-11"	6"
Z10	3'-3"	6"
Z11	2'-7"	6"

ALL BAR DIMENSIONS ARE OUT TO OUT.

BILL OF MATERIAL

BAR	NO.	SIZE	TYPE	LENGTH	WEIGHT
H1	6	#4	STR	9'-1"	36
H2	2	#4	STR	8'-2"	11
H3	2	#4	STR	4'-5"	6
H4	12	#4	1	3'-3"	26
H5	2	#4	STR	9'-10"	13
H6	6	#4	STR	12'-7"	50
H7	2	#4	STR	11'-4"	15
H8	2	#4	STR	6'-5"	9
H9	12	#4	2	3'-3"	26
H10	2	#4	STR	13'-2"	18

N1	2	#5	3	10'-2"	21
N2	2	#5	3	9'-7"	20
N3	2	#5	3	8'-9"	18
N4	3	#4	3	7'-7"	15
N5	3	#4	3	6'-4"	13
N6	2	#5	3	10'-5"	22
N7	3	#5	3	10'-1"	32
N8	2	#5	3	9'-3"	19
N9	3	#4	3	8'-2"	16
N10	3	#4	3	7'-3"	15
N11	3	#4	3	6'-4"	13

S1	6	#6	STR	6'-0"	54
T1	3	#5	STR	11'-0"	34
T2	3	#5	STR	14'-6"	45

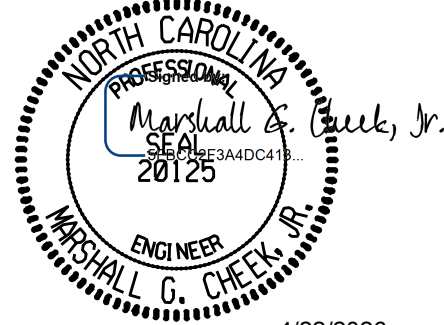
V1	2	#4	STR	8'-2"	11
V2	2	#4	STR	7'-6"	10
V3	2	#4	STR	6'-9"	9
V4	3	#4	STR	5'-6"	11
V5	3	#4	STR	4'-3"	9
V6	2	#4	STR	8'-3"	11
V7	3	#4	STR	8'-0"	16
V8	2	#4	STR	7'-0"	9
V9	3	#4	STR	6'-1"	12
V10	3	#4	STR	5'-2"	10
V11	3	#4	STR	4'-3"	9

Z1	2	#5	4	6'-0"	13
Z2	2	#5	4	5'-7"	12
Z3	2	#5	4	5'-0"	10
Z4	3	#4	4	4'-0"	8
Z5	3	#4	4	3'-1"	6
Z6	2	#5	4	6'-1"	13
Z7	3	#5	4	5'-8"	18
Z8	2	#5	4	5'-2"	11
Z9	3	#4	4	4'-5"	9
Z10	3	#4	4	3'-9"	8
Z11	3	#4	4	3'-1"	6

REINFORCING STEEL FOR 2 WINGS				778	LBS
CLASS A CONCRETE 2 WINGS				11.3	CY
1 HEADWALL				1.5	CY
1 END CURTAIN WALL				1.9	CY
TOTAL				14.7	CY

PROJECT NO. HN-0031  
TRANSYLVANIA COUNTY  
STATION: 16+45.00 -L-

SHEET 12 OF 12



4/22/2026

STATE OF NORTH CAROLINA  
DEPARTMENT OF TRANSPORTATION  
RALEIGH

STANDARD WINGS  
FOR  
RIGHT EXTENSION  
H = 8'-0" SLOPE = 2:1  
105° SKEW

DOCUMENT NOT CONSIDERED FINAL  
UNLESS ALL SIGNATURES COMPLETED

TGS ENGINEERS  
201 W. MARION ST STE 200  
SHELBY, NC 28150  
PH (704) 476-0003  
CORP. LICENSE NO.: C-0275

REVISIONS						SHEET NO.
NO.	BY:	DATE:	NO.	BY:	DATE:	
1			3			C-12
2			4			TOTAL SHEETS
						12

ASSEMBLED BY :	ZCS	DATE :	2/26
CHECKED BY :	MGC	DATE :	2/26
DRAWN BY :	CCJ	REV. 6/19	MAA/THC
CHECKED BY :	RWW	03/00	